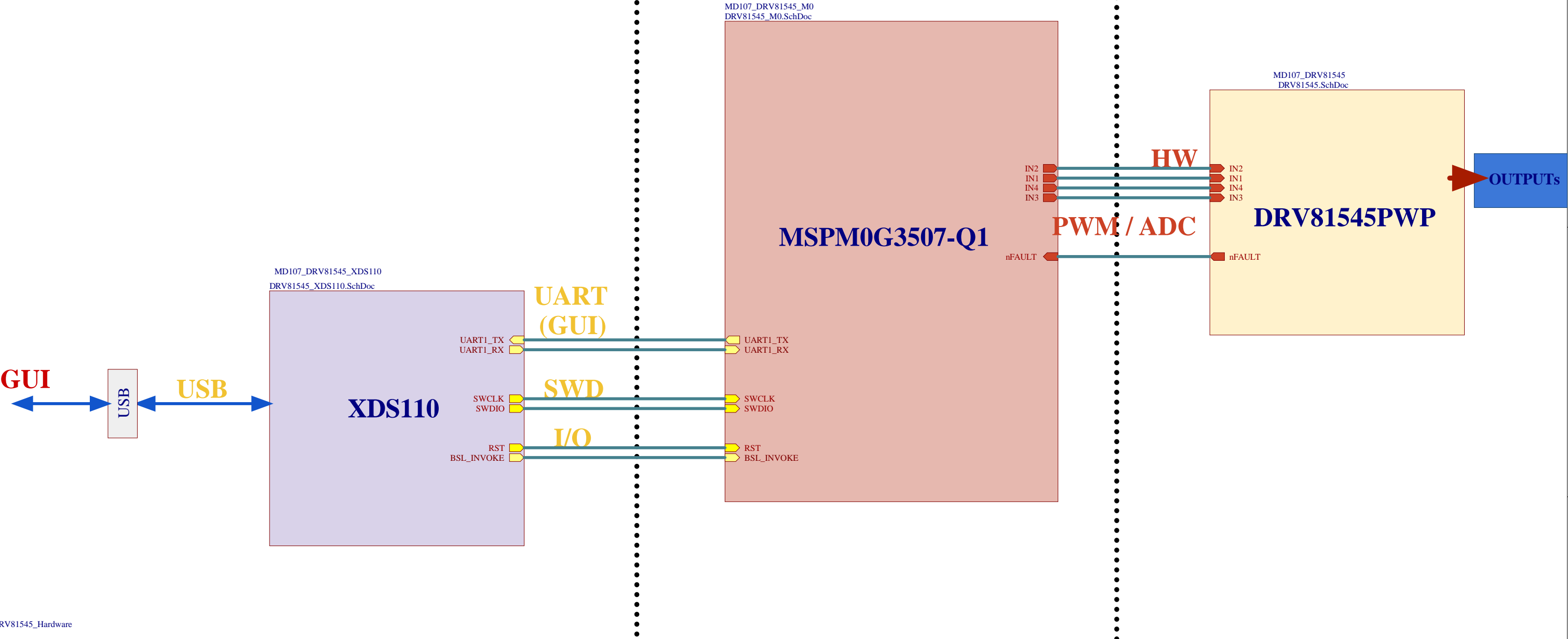


# DRV81545 TOP LEVEL SCHEMATIC

## INTERFACE/DEBUGGING

## PROCESSING

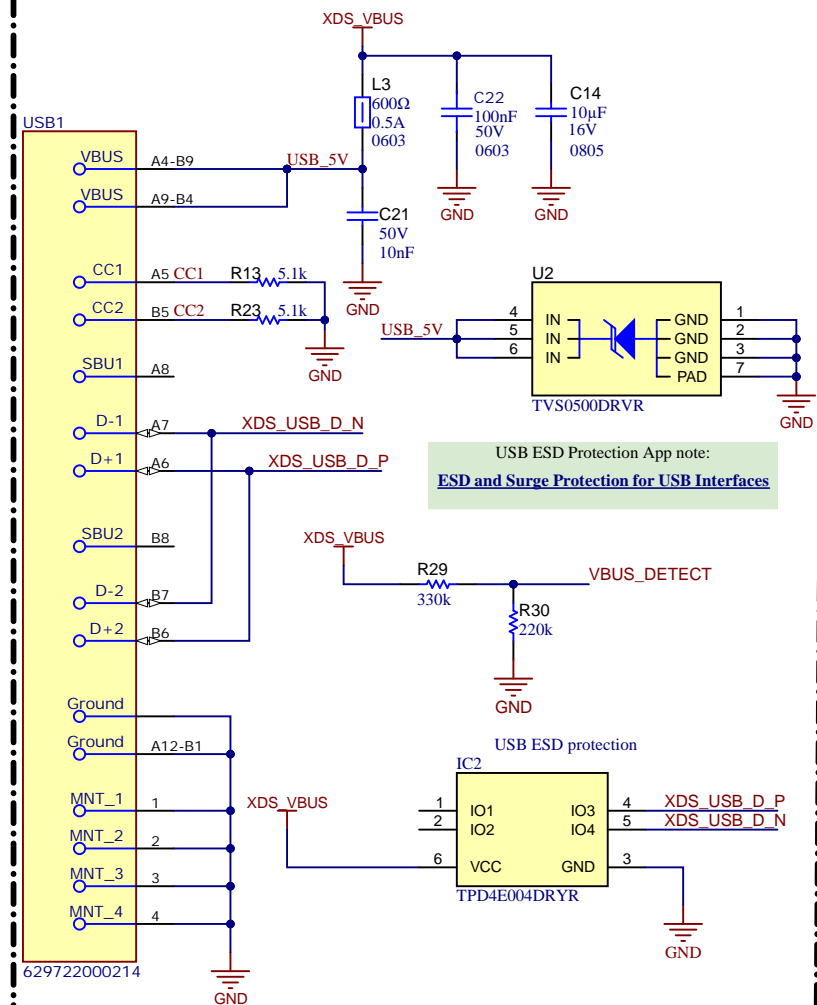
## DRIVER + OUTPUTS



Texas Instruments and/or its licensors do not warrant the accuracy or completeness of this specification or any information contained therein. Texas Instruments and/or its licensors do not warrant that this design will meet the specifications, will be suitable for your application or fit for any particular purpose, or will operate in an implementation. Texas Instruments and/or its licensors do not warrant that the design is production worthy. You should completely validate and test your design implementation to confirm the system functionality for your application.

Orderable: DRV81545EVM	Designed for: Public Release	Mod. Date: 5/19/2025
TID #: N/A	Project Title: DRV81545	
Number: MD107-001	Rev: E1	Sheet Title: TOP LEVEL SCHEMATIC
SVN Rev: Not in version control	Assembly Variant: DRV81545PWP	Sheet: 0 of 5
Drawn By: Mojtaba Afshar	File: DRV81545_Top_Level.SchDoc	Size: B
Engineer: Mojtaba Afshar	Contact: http://www.ti.com/support	

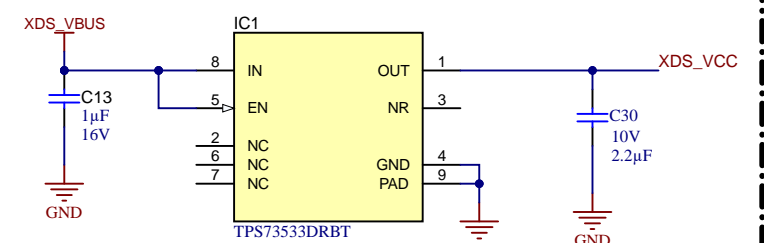
## USB-C Interface, ESD Protection



Recommend pairing with Wurth  
Electronics 632910731131 - USB-3.1  
C Male to 3.1 A Male Cable  
[DigiKey - 632910731131](#)  
[Wurth Elektronik - USB C Cables](#)

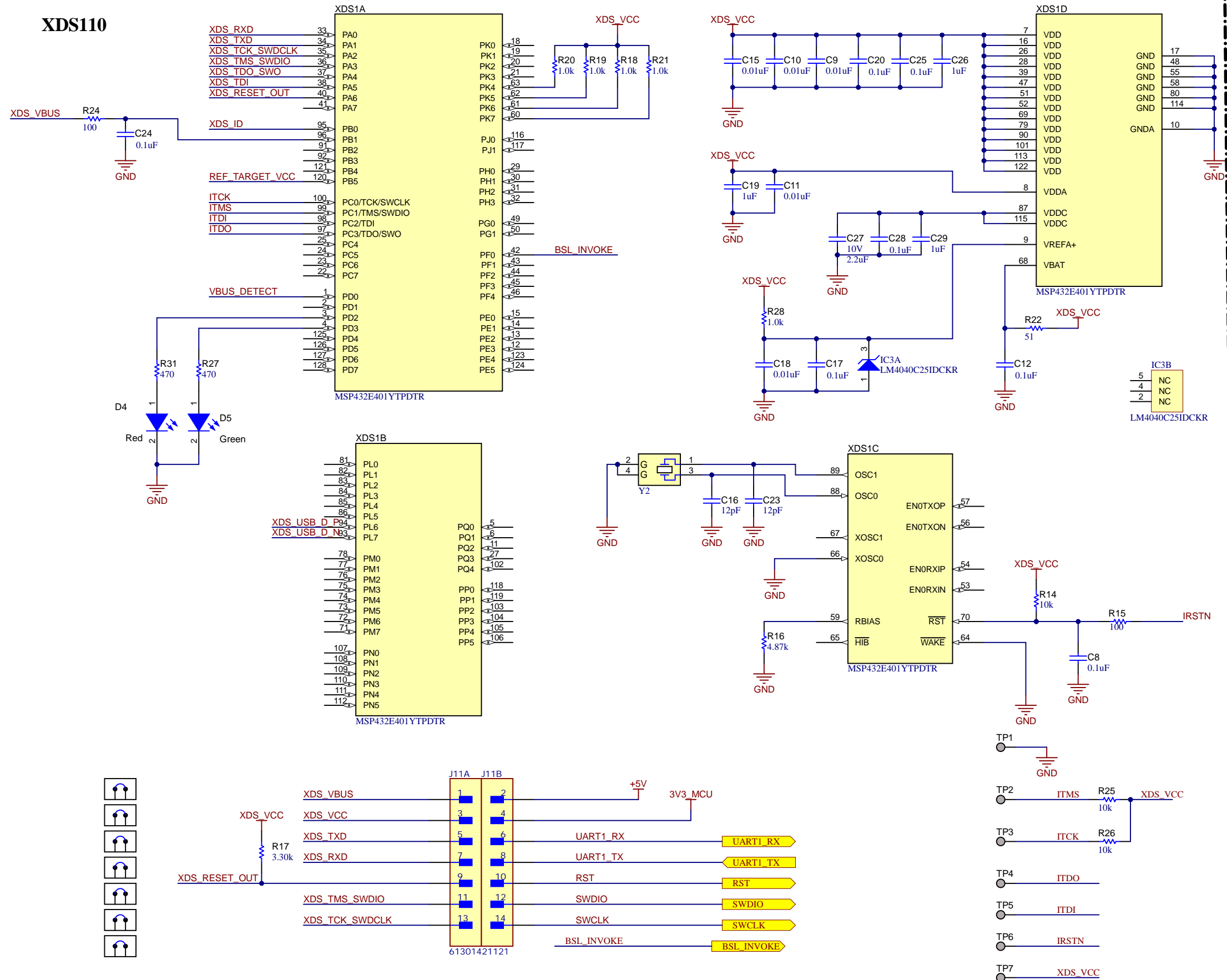
### 3.3V LDO

LDO 3v3 (for XDS)



500-mA  
Low IQ: 45  $\mu$ A  
Stable With a Ceramic, 2.2- $\mu$ F, Low-ESR Output  
Capacitor

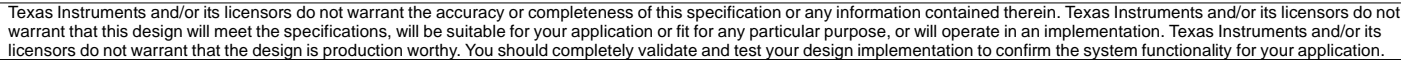
XDS--  
LDO current IINRUSH Inrush current 50 max 250 mA  
Peripheral Current Consumption

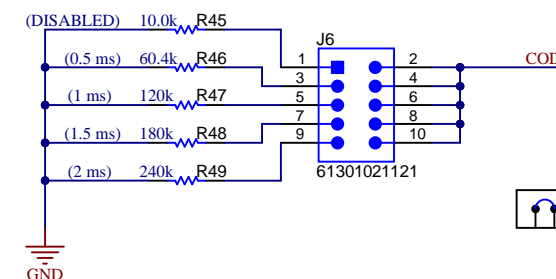
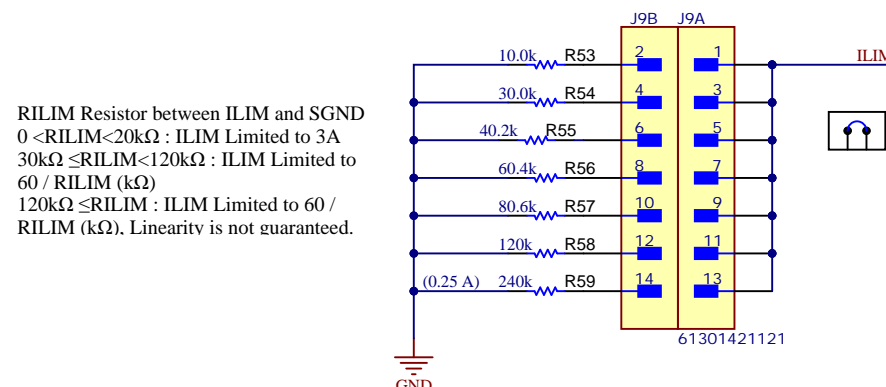
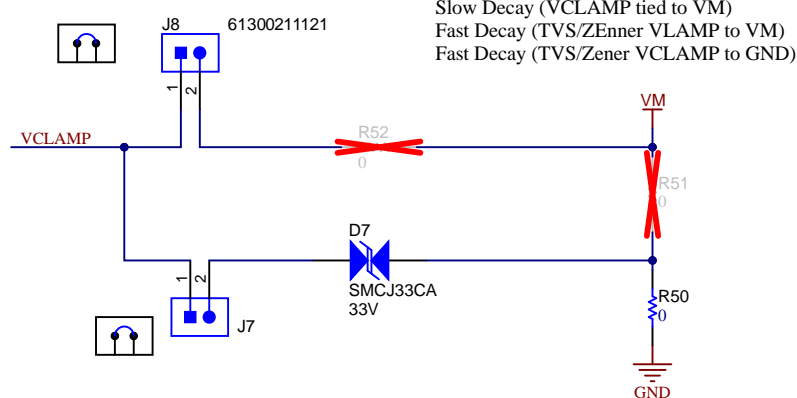
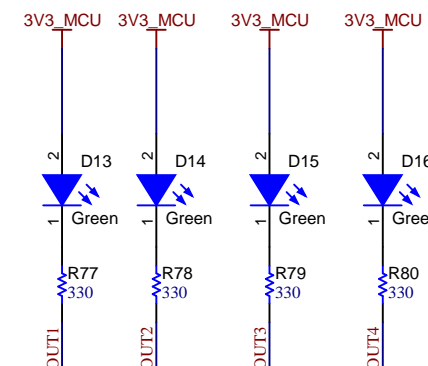
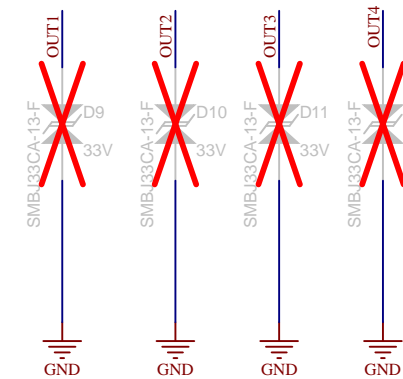
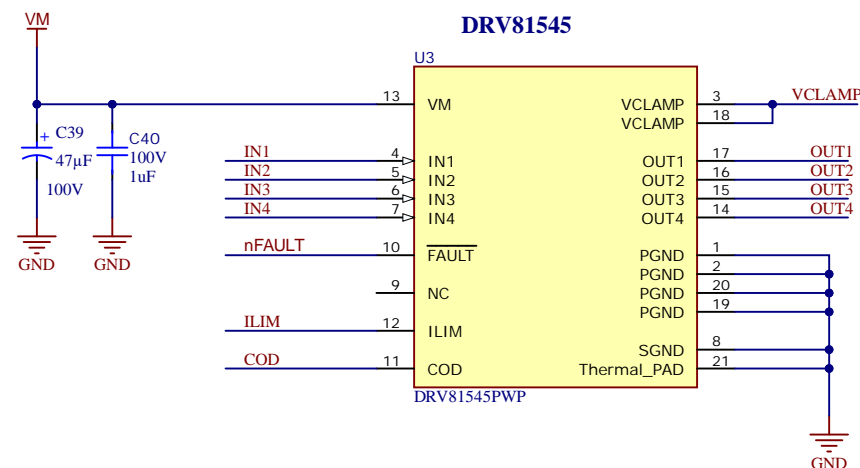
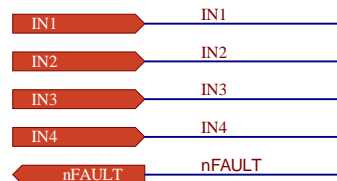
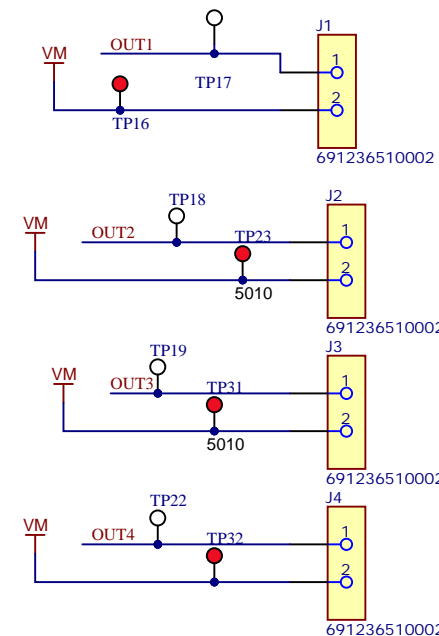
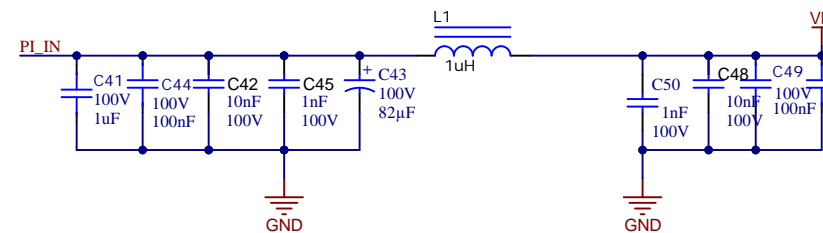
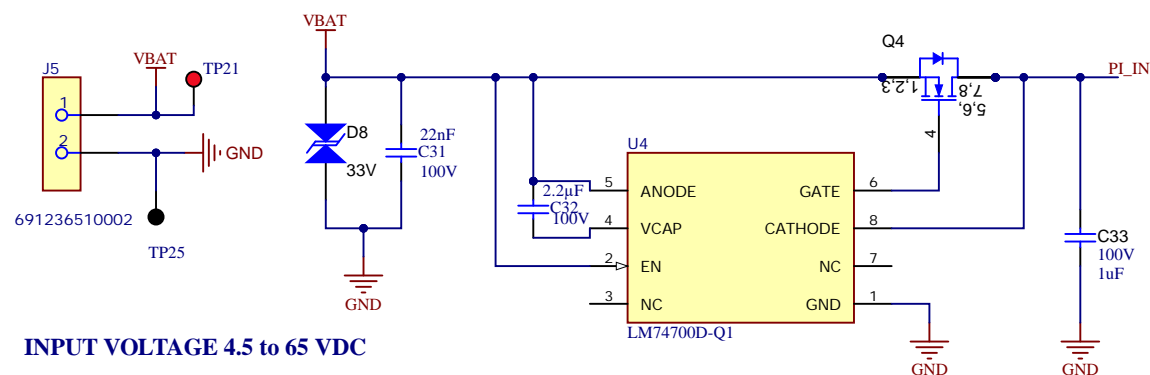
**XDS110**

XDS110 <<---->> LaunchPad

Orderable: <a href="#">DRV81545EVM</a>	Designed for: <a href="#">Public Release</a>	Mod. Date: 6/9/2025
TID #: <a href="#">N/A</a>	Project Title: <a href="#">DRV81545</a>	
Number: <a href="#">MD107-001</a>	Rev: <a href="#">E1</a>	Sheet Title: <a href="#">XDS110</a>
SVN Rev: Not in version control	Assembly Variant: <a href="#">DRV81545PWP</a>	Sheet: 1 of 5
Drawn By: <a href="#">Mojtaba Afshar</a>	File: <a href="#">DRV81545_XDS110.SchDoc</a>	Size: B
Engineer: <a href="#">Mojtaba Afshar</a>	Contact: <a href="#">http://www.ti.com/support</a>	

Texas Instruments and/or its licensors do not warrant the accuracy or completeness of this specification or any information contained therein. Texas Instruments and/or its licensors do not warrant that this design will meet the specifications, will be suitable for your application or fit for any particular purpose, or will operate in an implementation. Texas Instruments and/or its licensors do not warrant that the design is production worthy. You should completely validate and test your design implementation to confirm the system functionality for your application.





COD/INRUSH  
 $0 \leq \text{RCOD} < 20\text{k}\Omega$  : Disabled  
 $60\text{k}\Omega \leq \text{RCOD} \leq 240\text{k}\Omega \rightarrow \text{tCOD (ms)} = \text{RCOD(k}\Omega)/120$   
 Unconnected: INRUSH mode

